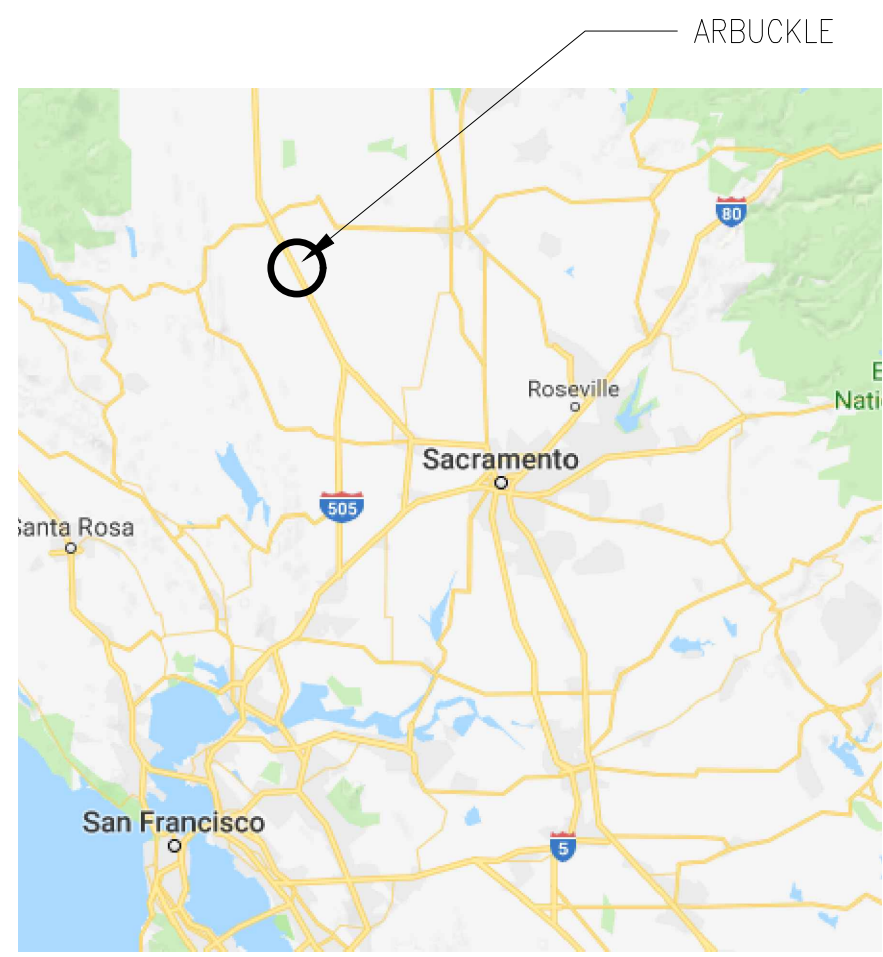


CORTINA CSD ROAD IMPROVEMENT PROJECT



VICINITY MAP
NOT TO SCALE

ELMER DR, MARY WAY, HALL ST, KIMBERLY CT, WILLIAM ST,
DOLBOW WAY, GARRY CT, ASA LN, DUKE DR,
KLEEMAN WAY, BARBARA WAY, DUTCH DR,
HOLLY OAK DR, WILLOW WOOD CT, SMOKY HOLLOW DR

GENERAL CONSTRUCTION NOTES:

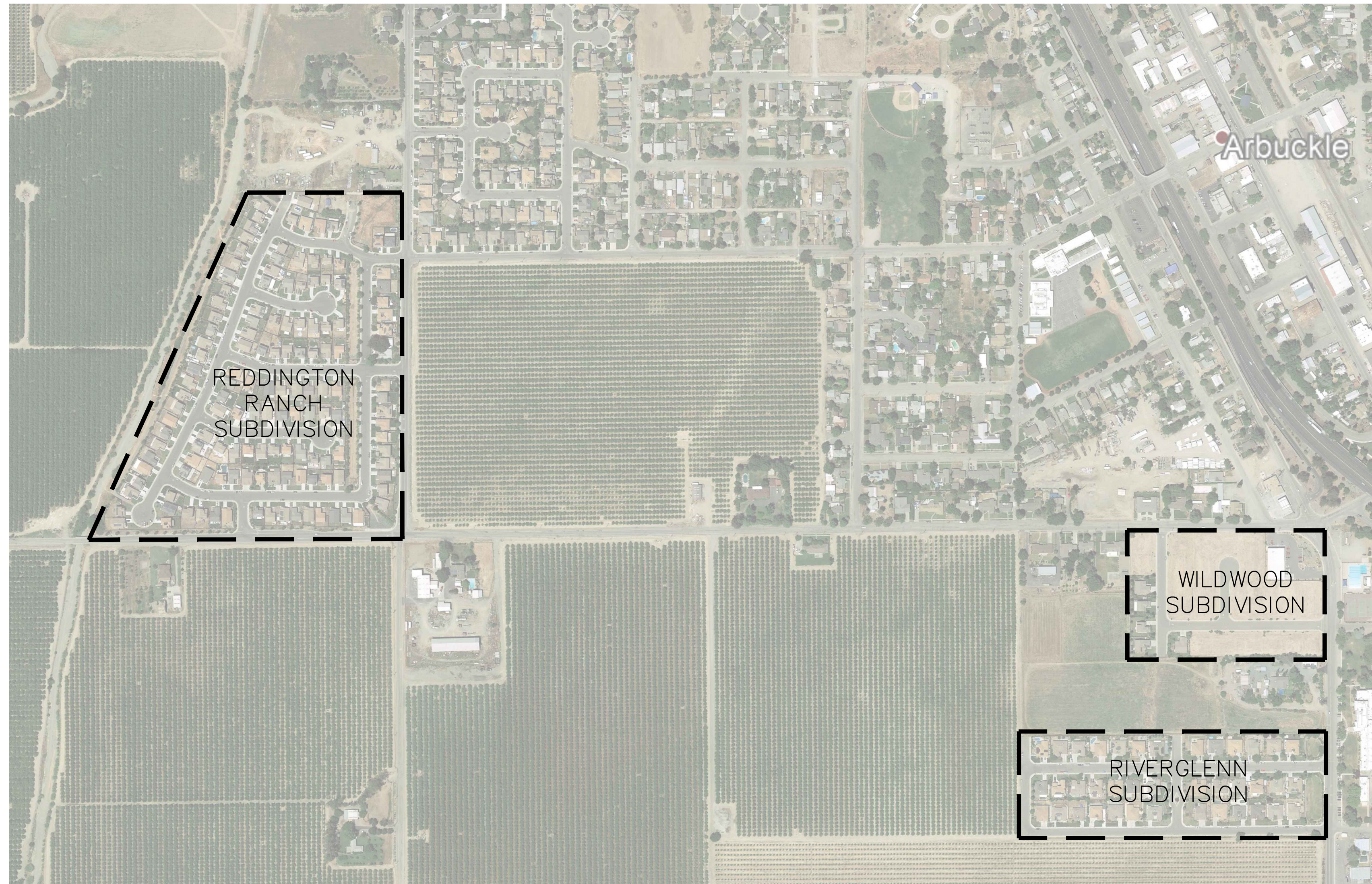
- ALL WORK SHOWN HEREON SHALL BE CONSTRUCTED IN ACCORDANCE WITH THE CALTRANS STANDARD SPECIFICATION, CURRENT EDITION.
- THE CONTRACTOR IS REQUIRED TO TAKE DUE PRECAUTIONARY MEASURES TO PROTECT THE UTILITIES OR SUBSTRUCTURES FOUND AT THE SITE. IT SHALL BE THE CONTRACTOR'S RESPONSIBILITY TO NOTIFY THE OWNERS OF THE UTILITIES OR SUBSTRUCTURES CONCERNED BEFORE STARTING WORK. (72-HOURS NOTICE REQUIRED.) PRIOR TO CONSTRUCTION, THE CONTRACTOR SHALL CONTACT UNDERGROUND SERVICE ALERT (USA) TOLL FREE AT 1-800-227-2600.
- PRIOR TO BEGINNING OF CONSTRUCTION, THE CONTRACTOR SHALL SUBMIT A TRAFFIC CONTROL PLAN FOR DISRUPTIVE STREET WORK, INCLUDING CONSTRUCTION SCHEDULE - SUBJECT TO APPROVAL BY THE ENGINEER. MINIMUM REQUIREMENTS ARE STATED IN THE SPECIFICATIONS. CONSTRUCTION WARNING DEVICES, SIGNS, ETC., SHALL CONFORM WITH CALIFORNIA MANUAL ON UNIFORM TRAFFIC CONTROL DEVICES.
- CONTRACTOR SHALL PROTECT ALL EXISTING PROPERTIES FROM DAMAGE IN ACCORDANCE WITH PROJECT SPECIFICATIONS

UTILITY CONTACT

STORMDRAIN
CORTINA CSD

WATER AND SEWER
COLUSA COUNTY WATER DISTRICT (530)476-2669

GAS AND ELECTRIC
PG&E (800)743-5000



PROJECT LOCATION MAP
NOT TO SCALE

ABBREVIATIONS

AB	AGGREGATE BASE	NIC	NOT IN CONTRACT
AC	ASPHALT CONCRETE	NTS	NOT TO SCALE
AD	AREA DRAIN	OG	ORIGINAL GROUND
ARV	AIR RELIEF VALVE	PAE	PUBLIC ACCESS EASEMENT
BSW	BACK OF SIDEWALK	PAVE	PAVEMENT ELEVATION
BO	BLOW-OFF VALVE	PCC	PORTLAND CEMENT CONCRETE
CB	CATCH BASIN	PT	POINT
C&G	CURB AND GUTTER	PL	PROPERTY LINE
CG&SW	CURB AND GUTTER AND SIDEWALK	PUE	PUBLIC UTILITY EASEMENT
CI	CURB INLET	PVC	POLYVINYL CHLORIDE
CICB	CURB INLET CATCH BASIN	R	RADIUS
CMP	CORRUGATED METAL PIPE	RCP	REINFORCED CONCRETE PIPE
CO	CLEAN OUT	RET	RETURN
CR	CURB RETURN	RIM	RIM ELEVATION
CTS	CORROSION TEST STATION	RT	RIGHT
C/L	CENTERLINE	ROW	RIGHT OF WAY
DI	DROP INLET	S	SLOPE
DIP	DUCTILE IRON PIPE	SD	STORM DRAIN
DR	DRIVE	SDMH	STORM DRAIN MANHOLE
DWY	DRIVEWAY	SHT	SHEET
E	ELECTRIC	SO	SIDE OPENING
EA	EACH	SS	SANITARY SEWER
EC	END CURVE	SSJID	SOUTH SAN JOAQUIN IRRIGATION DISTRICT
EL	ELEVATION	SSLH	SANITARY SEWER LAMPHOLE
EP	EDGE OF PAVEMENT	SSMH	SANITARY SEWER MANHOLE
ER	END OF RETURN	ST	STREET
EX	EXISTING	STA	STATION
FG	FINISHED GRADE	STD	STANDARD
FH	FIRE HYDRANT	S/W	SIDEWALK
FL	FLOW LINE	SDEQ	STORM DRAIN EQUALIZER
FOC	FACE OF CURB	TBO	TEMPORARY BLOW-OFF VALVE
G	GAS	TC	TOP OF CURB
GB	GRADE BREAK	TDOC	TOP DRIVE-OVER CURB (AT SCORE MARK)
HORZ	HORIZONTAL	TEL	TELEPHONE
INV	INVERT	TEMP	TEMPORARY
JP	JOINT UTILITY POLE	TYP	TYPICAL
LF	LINEAR FEET	USGS	UNITED STATES GEOLOGICAL SURVEY
LP	LOW POINT	VCP	VITRIFIED CLAY PIPE
LT	LEFT	VERT	VERTICAL
MAX	MAXIMUM	W	WATER
MH	MANHOLE	WV	WATER VALVE
MB	MAILBOX	W/	WITH
MIN	MINIMUM	WELO	WATER EFFICIENT LANDSCAPE ORDINANCE

SHEET INDEX

- COVER SHEET
- WILDWOOD SUBDIVISION IMPROVEMENTS
- REDDINGTON RANCH SUBDIVISION IMPROVEMENTS
- REDDINGTON RANCH SUBDIVISION IMPROVEMENTS
- RIVERGLENN SUBDIVISION IMPROVEMENTS



WARNING CAUTION
EXISTING UNDERGROUND UTILITIES
CONTACT: UNDERGROUND SERVICE
ALERT PHONE: (800) 642-2444
FOR MARKING PRIOR TO DIGGING

95% PROGRESS SET

CORTINA COMMUNITY SERVICES DISTRICT
PAVEMENT REHABILITATION PROJECT

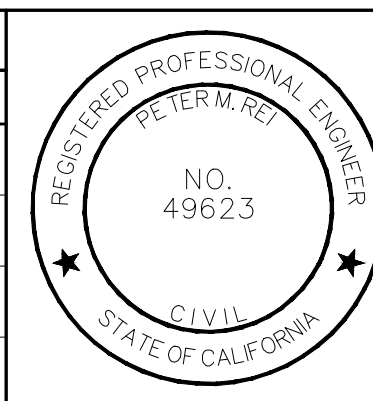
COVER SHEET

ARBUCKLE, CALIFORNIA

C:\ACAD\Willdan\109311_CSD_Cortina\900-PS&E\901-Plans\109311-PL-TITLE-01.dwg - 7/24/2020 8:10 AM



REVISIONS			
NO.	DESCRIPTION	APP.	DATE



APPROVED BY: *Peter M. Rei* 07/14/2020
DATE

GENERAL MANAGER
UNDER THE SUPERVISION OF:
Peter M. Rei 49623 07/14/2020
PETER M. REI R.C.E. DATE

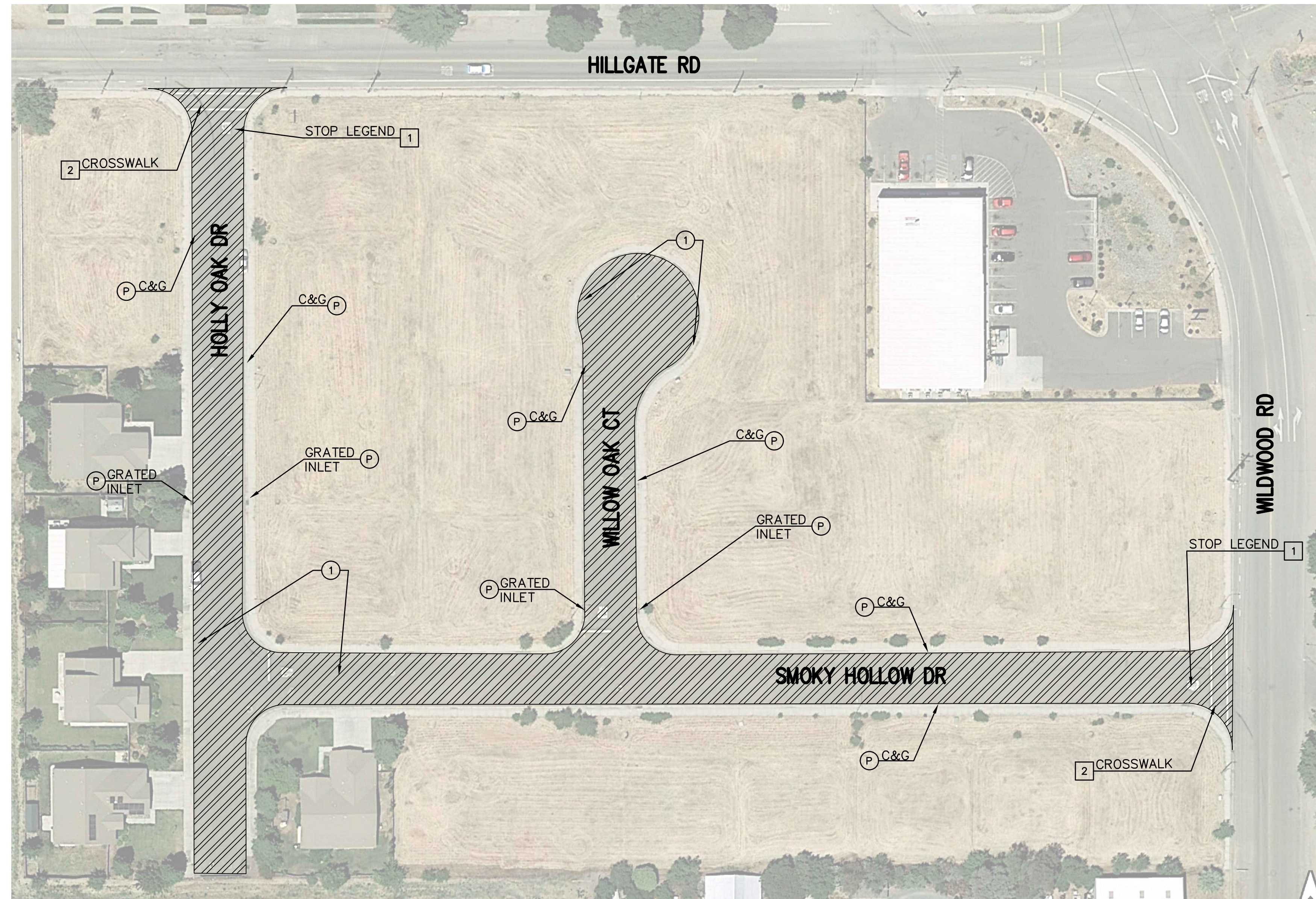
PLANS PREPARED BY:
WILLDAN Engineering
2014 TULARE STREET, SUITE 515
FRESNO, CALIFORNIA 93721
(559)443-5290

CORTINA COMMUNITY SERVICES DISTRICT
PO BOX 43
ARBUCKLE, CA 95912

DATE: 07/24/2020
SCALE: AS-NOTED
PROJECT NO.: 109311
DRAWN BY: GG
CHECKED BY: PR
SHEET: 1 OF 5

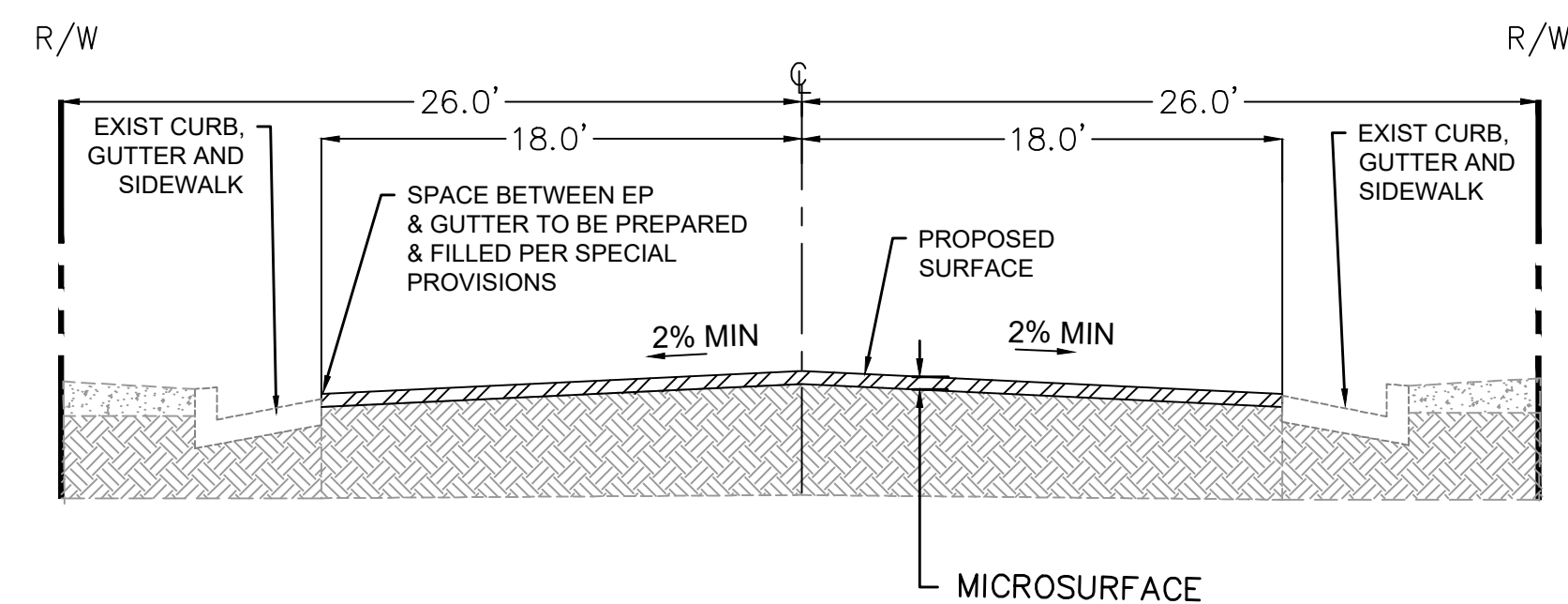
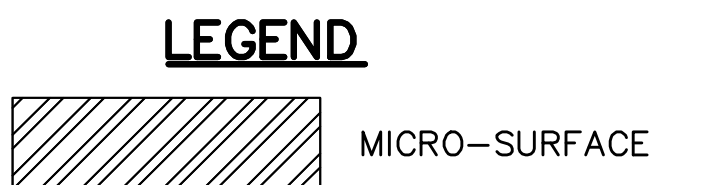
95% Progress Plot Jul 24, 2020

WILDWOOD SUBDIVISION



- CONSTRUCTION NOTES:**
- (P) PROTECT IN PLACE.
 - (1) APPLY MICRO-SURFACING.

- CONSTRUCTION NOTES:
SIGNING AND STRIPING**
- (1) INSTALL STRIPING DETAIL OR PAVEMENT MARKING AS INDICATED.
 - (2) INSTALL 12" WHITE CROSSWALK. CROSSWALK SHALL BE 10" IN WIDTH (INSIDE TO INSIDE) UNLESS OTHERWISE INDICATED.



TYPICAL SECTION – MICROSURFACE
NOT TO SCALE

C:\ACAD\Willdan\109311_CSD_Cortina\900-PS&E\901-Plans\109311-PL-02.dwg - 7/22/2020 5:17 PM



Know what's below.
Call before you dig.

REVISIONS			
NO.	DESCRIPTION	APP.	DATE



APPROVED BY:

GENERAL MANAGER
UNDER THE SUPERVISION OF:
Peter M. Rei
PETER M. REI
49623 R.C.E.
07/14/2020 DATE

PLANS PREPARED BY:
WILLDAN
Engineering
2014 TULARE STREET, SUITE 515
FRESNO, CALIFORNIA 93721
(559)443-5290

CORTINA COMMUNITY SERVICES DISTRICT
PO BOX 43
ARBUCKLE, CA 95912

CORTINA COMMUNITY SERVICES DISTRICT
PAVEMENT REHABILITATION PROJECT

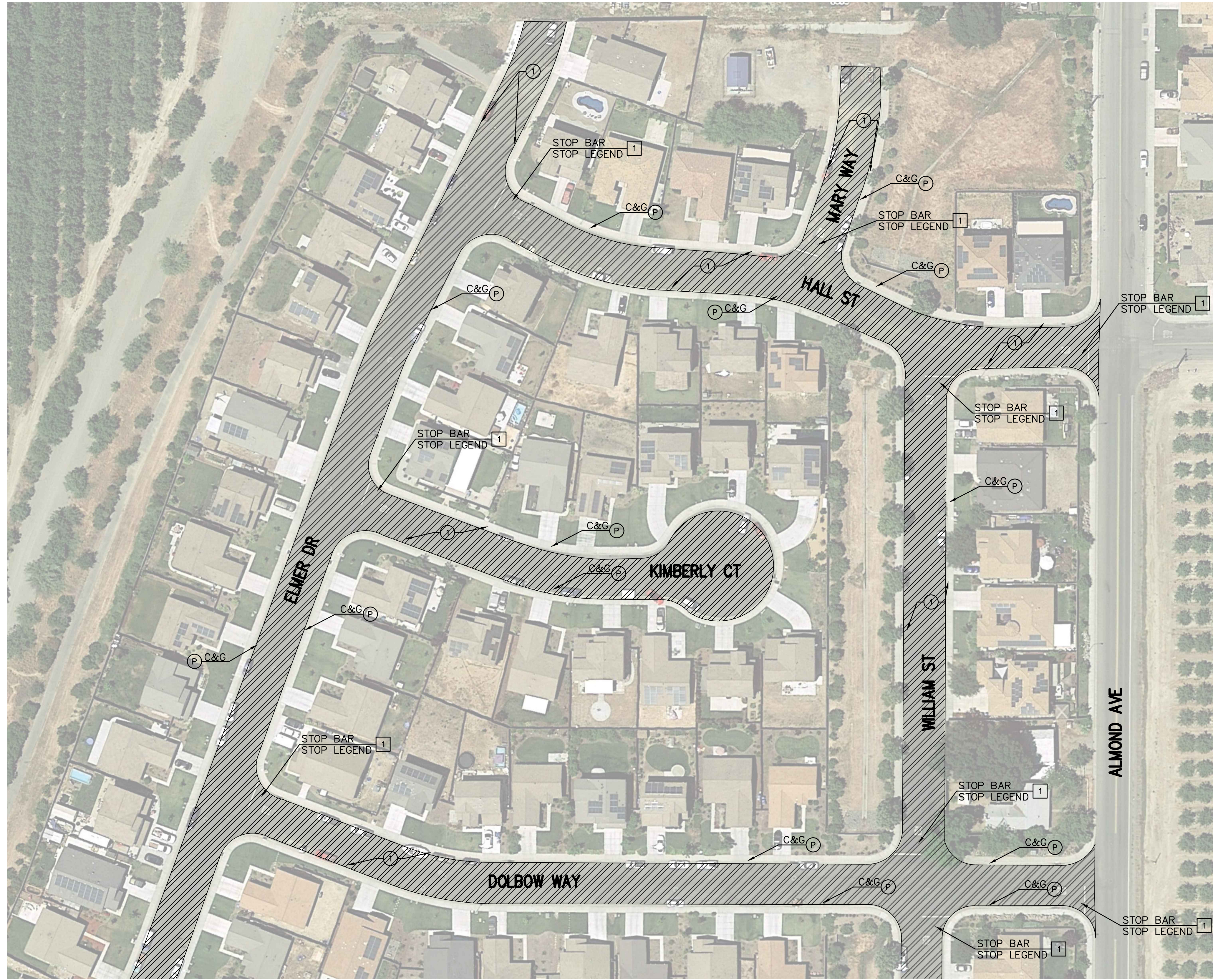
HOLLY OAK DR, WILLOW WOOD CT, AND
SMOKY HOLLOW DR

ARBUCKLE, CALIFORNIA

DATE: 07/24/2020
SCALE: AS-NOTED
PROJECT NO. 109311
DRAWN BY: GG
CHECKED BY: PR
SHEET: 2 OF 5

95% Progress Plot Jul 24, 2020

REDDINGTON RANCH SUBDIVISION



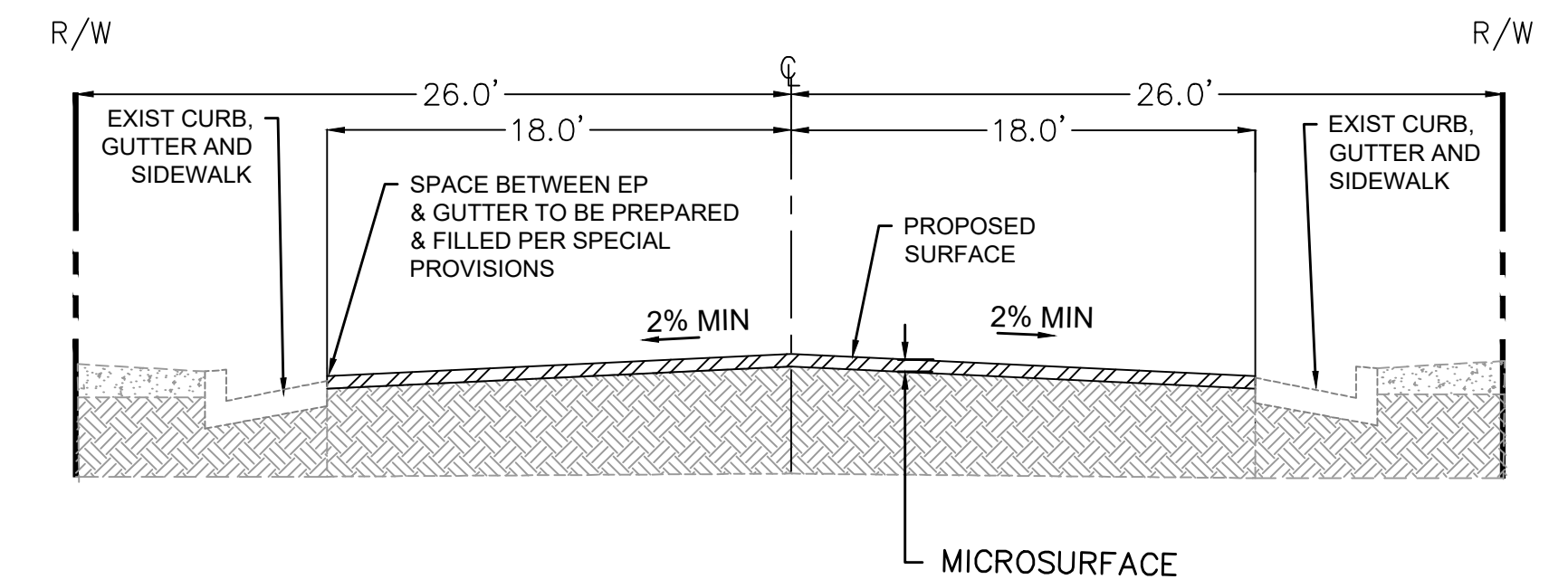
CONSTRUCTION NOTES:

- (P) PROTECT IN PLACE.
- (1) APPLY MICRO-SURFACING.

CONSTRUCTION NOTES: SIGNING AND STRIPING

- (1) INSTALL STRIPING DETAIL OR PAVEMENT MARKING AS INDICATED.

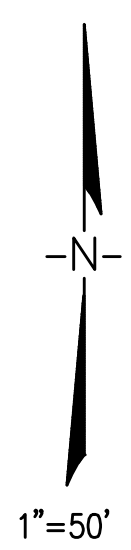
LEGEND



TYPICAL SECTION - MICROSURFACE

NOT TO SCALE

C:\ACAD\Willdan\109311_CSD_Cortina\900-PS&E\901-Plans\109311-PL-03.dwg - 7/24/2020 8:34 AM

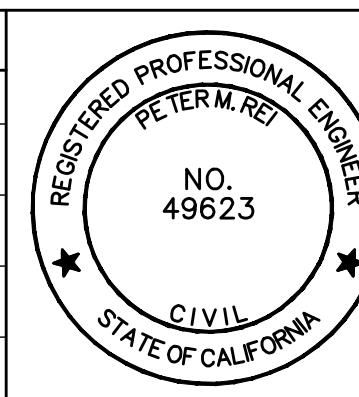


SEE SHEET 4

SEE SHEET 4



REVISIONS			
NO.	DESCRIPTION	APP.	DATE



APPROVED BY:
 GENERAL MANAGER
 UNDER THE SUPERVISION OF:
 PETER M. REI
 07/14/2020
 DATE
 49623
 R.C.E.
 07/14/2020
 DATE

PLANS PREPARED BY:

WILLDAN
 Engineering
 2014 TULARE STREET, SUITE 515
 FRESNO, CALIFORNIA 93721
 (559)443-5290

CORTINA COMMUNITY SERVICES DISTRICT
PAVEMENT REHABILITATION PROJECT
 MARY WAY, HALL ST, ELMER DR, KIMBERLY CT,
 WILLIAM ST, DOLBOW WAY
 ARBUCKLE, CALIFORNIA

CORTINA COMMUNITY SERVICES DISTRICT
 PAVEMENT REHABILITATION PROJECT
 MARY WAY, HALL ST, ELMER DR, KIMBERLY CT,
 WILLIAM ST, DOLBOW WAY
 ARBUCKLE, CALIFORNIA

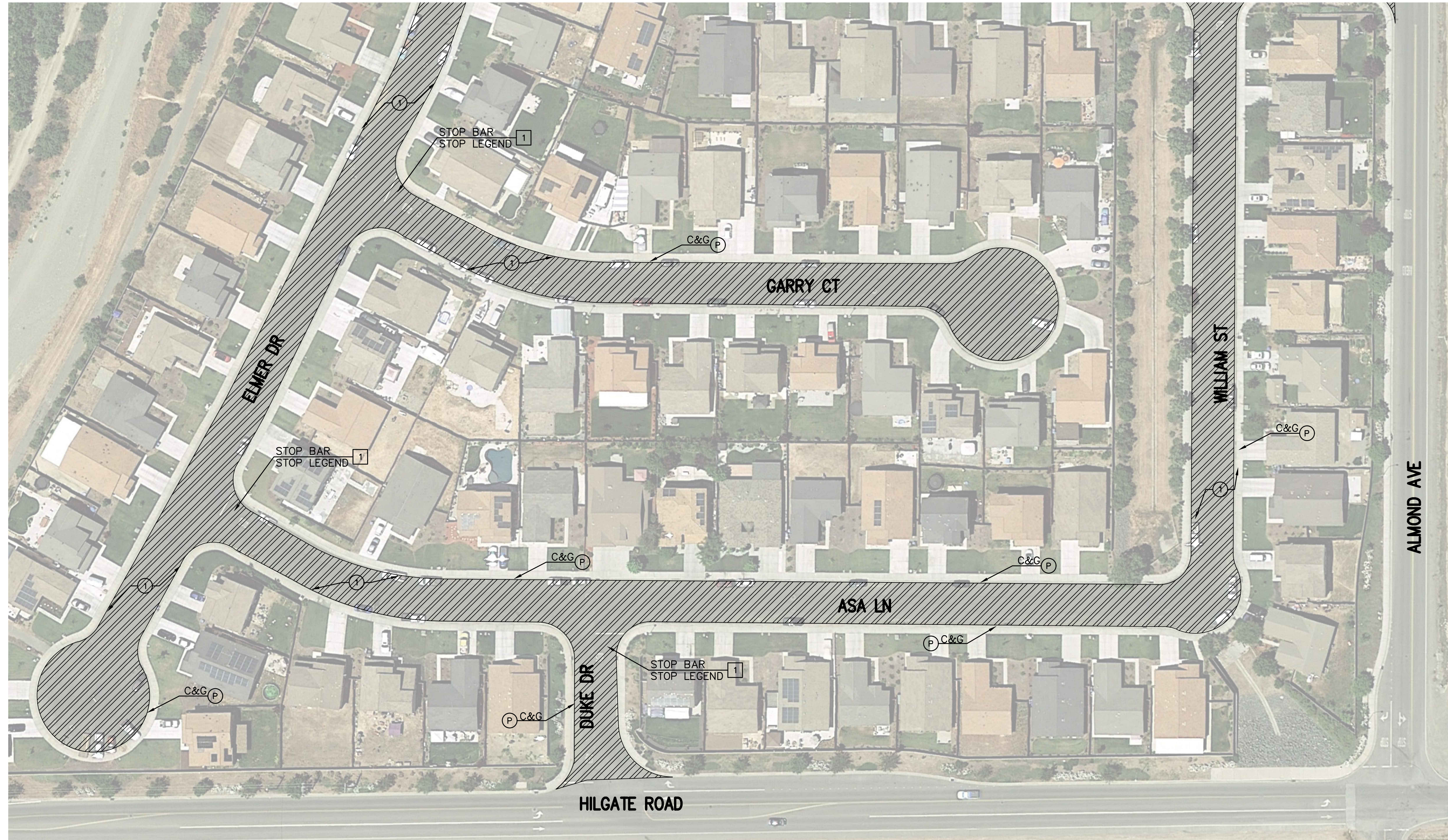
DATE: 07/24/2020
 SCALE: AS-NOTED
 PROJECT NO. 109311
 DRAWN BY: GG
 CHECKED BY: PR
 SHEET: 3 OF 5

95% Progress Plot Jul 24, 2020

REDDINGTON RANCH SUBDIVISION

SEE SHEET 3

SEE SHEET 3



CONSTRUCTION NOTES:

- Ⓟ PROTECT IN PLACE.
- ① APPLY MICRO-SURFACING.

CONSTRUCTION NOTES: SIGNING AND STRIPING

- ① INSTALL STRIPING DETAIL OR PAVEMENT MARKING AS INDICATED.

LEGEND



1"=50'

C:\ACAD\Willdan\109311_CSD_Cortina\900-PS&E\901-Plans\109311-PL-04.dwg - 7/24/2020 6:33 AM



Know what's below.
Call before you dig.

REVISIONS			
NO.	DESCRIPTION	APP.	DATE



APPROVED BY:

GENERAL MANAGER
UNDER THE SUPERVISION OF:
Peter M. Rei
PETER M. REI
49623 R.C.E.
07/14/2020 DATE

PLANS PREPARED BY:
WILLDAN
Engineering
2014 TULARE STREET, SUITE 515
FRESNO, CALIFORNIA 93721
(559)443-5290

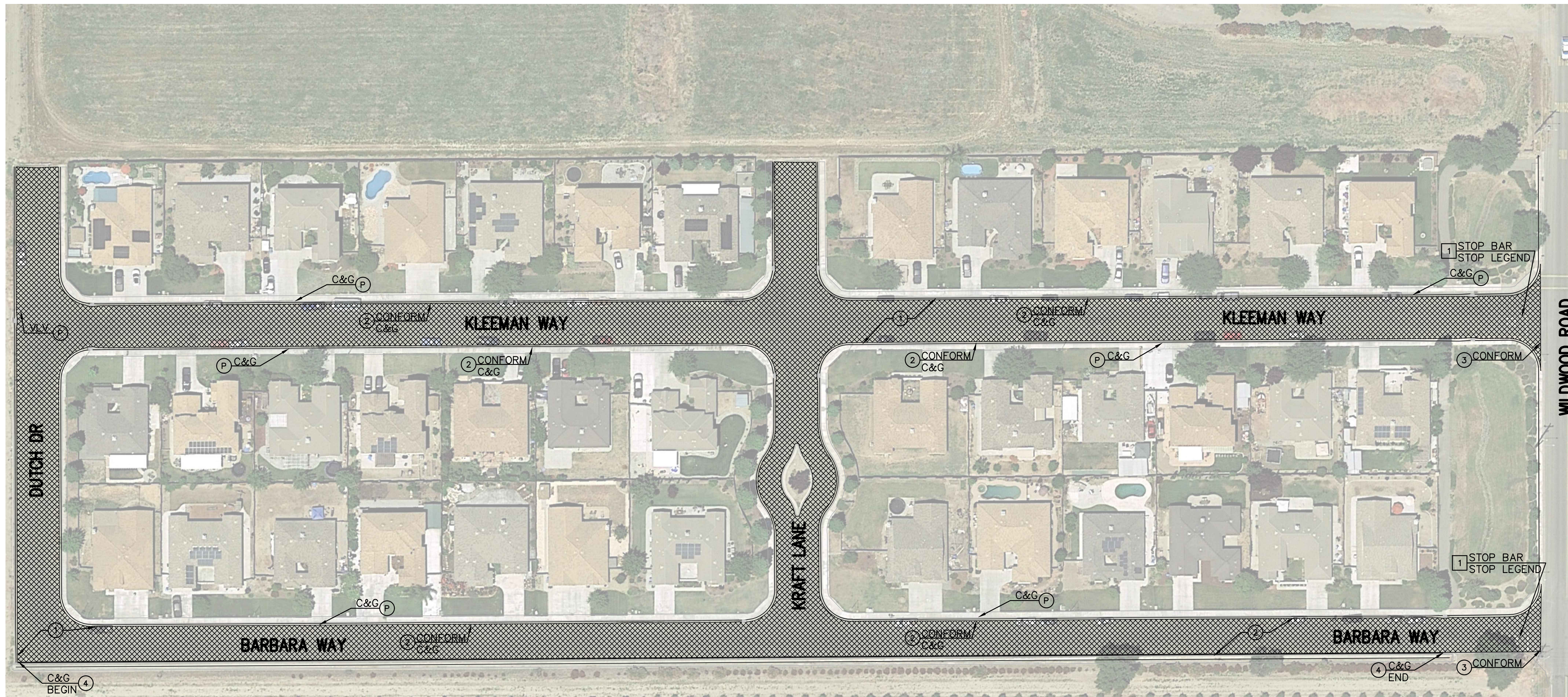
CORTINA COMMUNITY SERVICES DISTRICT
PO BOX 43
ARBUCKLE, CA 95912

CORTINA COMMUNITY SERVICES DISTRICT
PAVEMENT REHABILITATION PROJECT
ELMER DR, GARRY CT, ASA LN,
WILLIAM ST, DUKE DR
ARBUCKLE, CALIFORNIA

DATE: 07/24/2020
SCALE: AS-NOTED
PROJECT NO. 109311
DRAWN BY: GG
CHECKED BY: PR
SHEET: 4 OF 5

95% Progress Plot Jul 24, 2020

RIVERGLENN SUBDIVISION

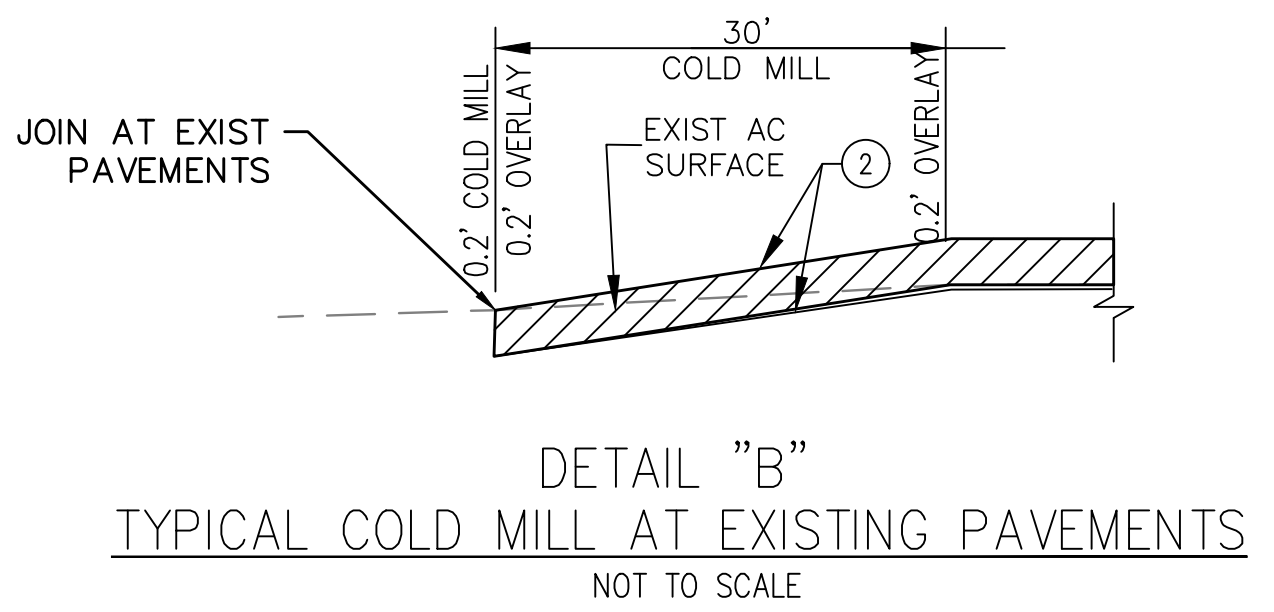
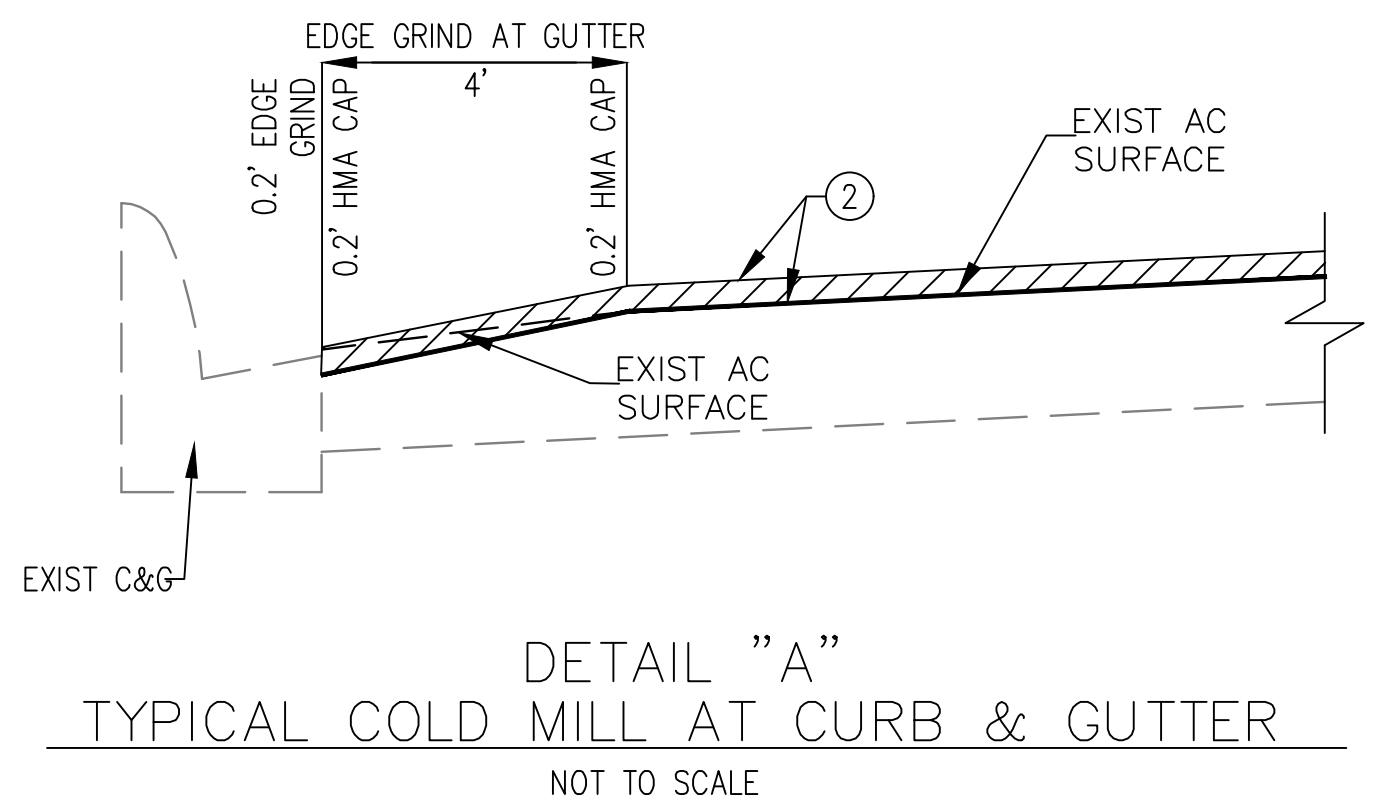
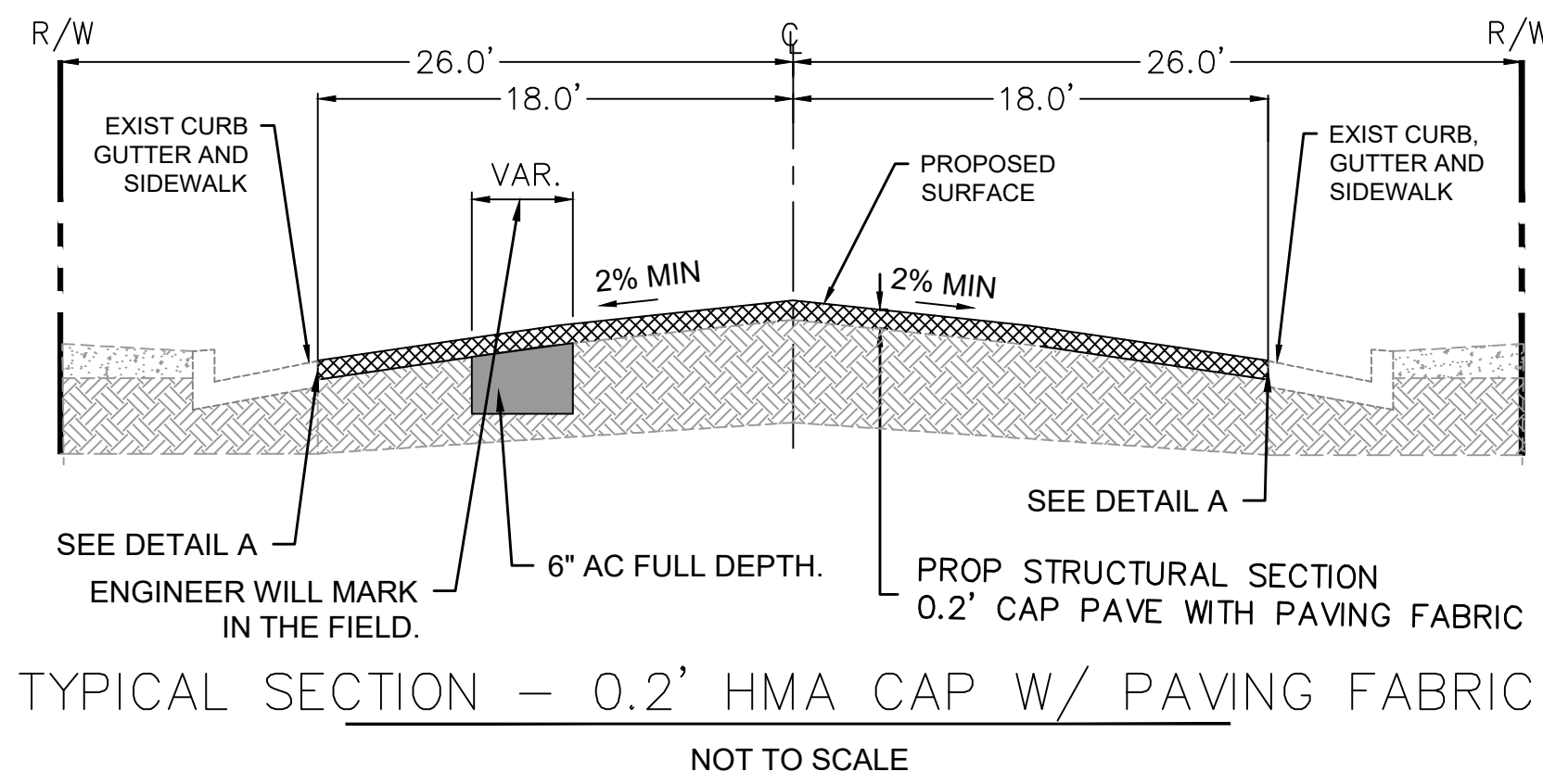


- CONSTRUCTION NOTES:**
- Ⓟ PROTECT IN PLACE.
 - ① APPLY 0.2' HMA CAP WITH PAVING FABRIC (TYP).
 - ② SEE DETAIL "A" FOR COLD MILL CONFORM
 - ③ SEE DETAIL "B" FOR COLD MILL CONFORM
 - ④ CONSTRUCT CALTRANS TYPE A2-6 CURB AND GUTTER

- CONSTRUCTION NOTES:
SIGNING AND STRIPING**
- ① INSTALL STRIPING DETAIL OR PAVEMENT MARKING AS INDICATED.

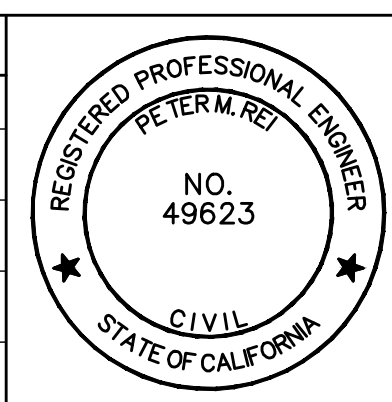
LEGEND

0.2' HMA CAP WITH PAVING FABRIC



C:\ACAD\Willdan\109311_CSD_Cortina\900-PS&E\901-Plans\109311-PL-05.dwg - 7/24/2020 6:31 AM

REVISIONS			
NO.	DESCRIPTION	APP.	DATE



APPROVED BY:

07/14/2020 DATE

GENERAL MANAGER

UNDER THE SUPERVISION OF:

Peter M. Rei 49623 07/14/2020 R.C.E. DATE

PLANS PREPARED BY:

WILLDAN
Engineering

2014 TULARE STREET, SUITE 515
FRESNO, CALIFORNIA 93721
(559)443-5290

CORTINA COMMUNITY SERVICES DISTRICT

PO BOX 43
ARBUCKLE, CA 95912

CORTINA COMMUNITY SERVICES DISTRICT

PAVEMENT REHABILITATION PROJECT

DUTCH DR, KRAFT LN,
KLEEMAN WAY, BARBARA WAY

ARBUCKLE, CALIFORNIA

DATE: 07/24/2020

SCALE: AS-NOTED

PROJECT NO. 109311

DRAWN BY: GG

CHECKED BY: PR

SHEET: 5 OF 5

95% Progress Plot Jul 24, 2020