

Biondi Paving Inc dba



A STREET REPAIR PROJECT WILL BE COMPLETED IN YOUR SUBDIVISION

We have been contracted by **The Cortina Community Services District** for this project

Construction will take about 4 weeks beginning on:

**Thursday July 8, 2021 with working hours of
8:00 AM- 6:00 PM M-F**

During the days and times listed above, on-street parking will not be allowed.

Emergency Vehicles will be allowed immediate access through the work area.

Our work will be completed in 2 Phases. Please, see the attached Phasing Map.

Phase 1 will take approximately 2 ½ weeks to complete

Phase 2 will take approximately 1 ½ weeks to complete.

Our goal is to minimize any inconvenience and to provide a safe working environment for our employees and the public.


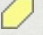
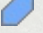
Thank you in advance for your cooperation.

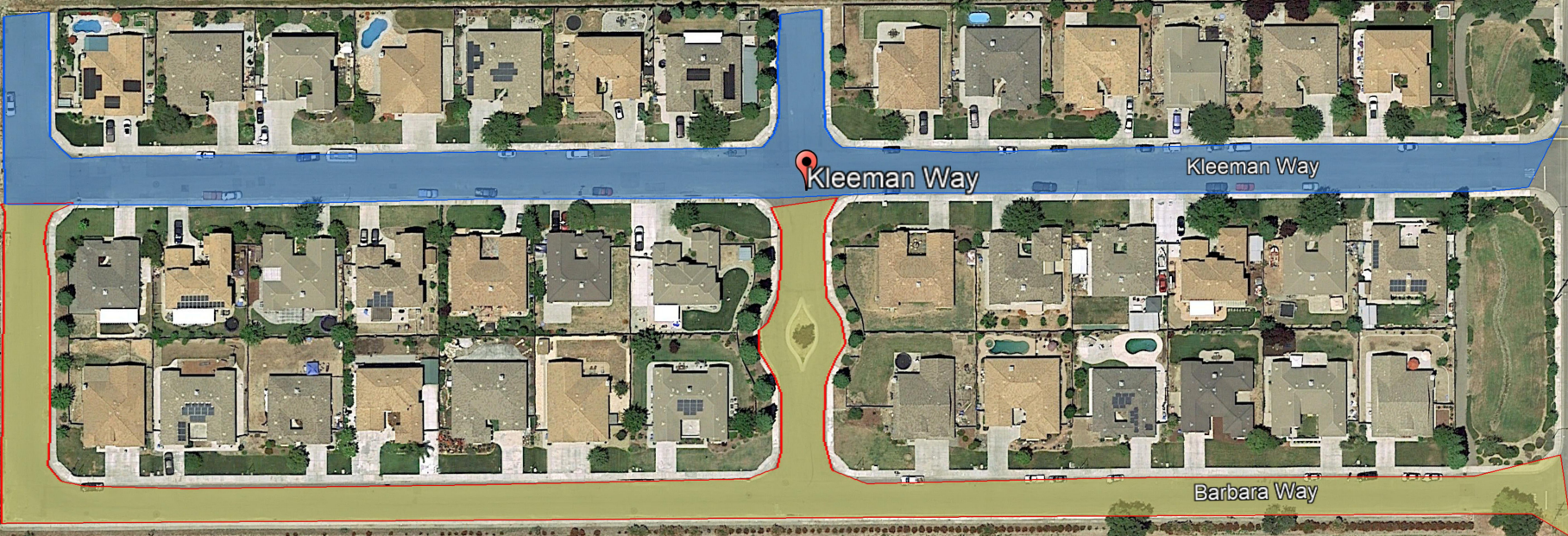
If you have any questions, please contact Neal Jensen, Biondi Paving, Inc. 916-869-2027

8150 37th Avenue Sacramento, CA 95824 tel.916.383.5982 fax.916.383.5982

Cortina CSD Phasing Plan

Legend

-  Kleeman Way
-  Phase 1
-  PHASE 2



500 ft